

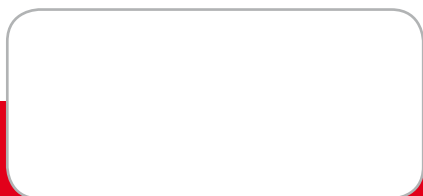
# ZŁĄCZKI

MOSIĄDZ

## ZŁĄCZKI

MOSIĄDZ

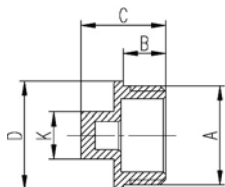
- wysoka jakość użytych materiałów
- precyzyjne i solidne wykonanie korpusu
- odpowiednie fazowanie wejścia gwintu ułatwiające wkręcanie jednej złączki w drugą
- radełkowanie gwintów zapobiegające ześlizgiwaniu się uszczelnienia podczas skręcania
- średnice do 2"



# ZŁĄCZKI

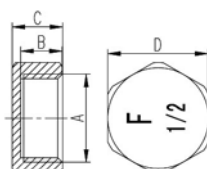
MOSIĄDZ

## KOREK



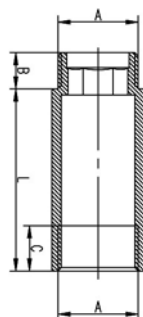
B [mm]	C [mm]	D. [mm]	K [mm]	A	Kod towaru
9	18	23	10	G1/2	R023301015
11	20	30	13	G3/4	R023301016
11,5	21,5	37	16	G1	R023301017
12,5	25,5	45	22	G5/4	R023301018
13	28,5	52	23	G6/4	R023301019
17	34,5	63	30	G2	R023301020

## ZASLEPKA



B [mm]	C [mm]	D. [mm]	K [mm]	Kod towaru
10	12	24	G1/2	R023301078
11,5	13,5	30	G3/4	R023301079
13	15	36	G1	R023301080
13	15	45,5	G5/4	R023301081
13,5	16	52	G6/4	R023301082
16,5	19	63,5	G2	R023301083

## PRZEDŁUŻKA MOSIĘŻNA



B [mm]	C [mm]	D. [mm]	K [mm]	Kod towaru
10	8,5	10	G1/2	R023301087
12	8	10	G3/4	R023301095
10	12	15	G1/2	R023301088
12	13	15	G3/4	R023301096
10	12	20	G1/2	R023301089
12	15	20	G3/4	R023301097
10	12	25	G1/2	R023301090
12	15	25	G3/4	R023301098
10	12	30	G1/2	R023301091
12	15	30	G3/4	R023301099
10	12	40	G1/2	R023301092
12	15	40	G3/4	R023301100
10	12	50	G1/2	R023301093
12	15	50	G3/4	R023301101
10	12	60	G1/2	R023301094
12	15	60	G3/4	R023301102

## KOREK MOSIĘŻNY

DO ROZDZIELACZA 1" Z ORINGIEM



Kod towaru  
R023301084

## NYPEL MOSIĘŻNY

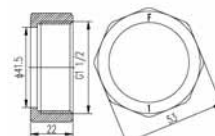
DO ROZDZIELACZA 3/4" X 1/2" Z ORINGIEM



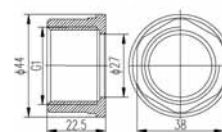
Kod towaru  
R023301084

## ŚRUBUNEK

DO POMPY 6/4" X 1" MOSIĘŻNY ŻÓŁTY



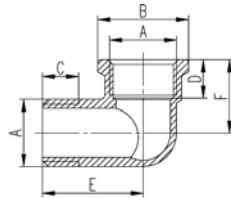
Kod towaru  
R023301084



# ZŁĄCZKI

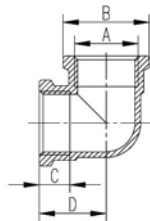
MOSIĄDZ

## KOLANKO NAKRĘTNO-WKRĘTNE



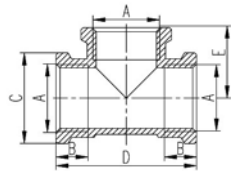
B [mm]	C [mm]	D [mm]	E [mm]	F [mm]	A	Kod towaru
22,5	9	8,5	24,5	17	G3/8	R023301008
27	10,5	11	29	22	G1/2	R023301011
34	12,5	13	33,5	28	G3/4	R023301009
40	13	14	38	32	G1	R023301010
49	15	15	45	37	G5/4	R023301012
55	16	16	48	40	G6/4	R023301013
68	19	20	62	52	G2	R023301014

## KOLANKO NAKRĘTNO-NAKRĘTNE



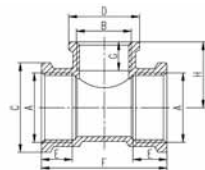
B [mm]	C [mm]	D [mm]	A	Kod towaru
22,5	8,5	17,5	G3/8	R023301002
27	11	22	G1/2	R023301003
34	13,5	28	G3/4	R023301001
40	14	32	G1	R023301004
49	16	38	G5/4	R023301005
55	16	40,5	G6/4	R023301006
68	20	51	G2	R023301007

## TRÓJNIK NAKRĘTNY



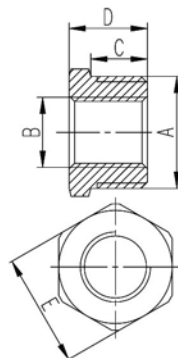
B [mm]	C [mm]	D [mm]	E [mm]	A	Kod towaru
8,5	22,5	35	17,5	G3/8	R023301068
11	27	44	22	G1/2	R023301069
13,5	34	56	28	G3/4	R023301070
14	40	64	32	G1	R023301071
16	49	76	38	G5/4	R023301072
16	55	81	40,5	G6/4	R023301073
20	68	102	51	G2	R023301074

## TRÓJNIK NAKRĘTNY REDUKCYJNY



C [mm]	D	E [mm]	F [mm]	G [mm]	H [mm]	A	B	Kod towaru
34	27	13	28	11	25	G3/4	G1/2	R023301075
40	27	14	52	11	27,5	G1	G1/2	R023301076
40	34	14	57	13,5	30	G1	G3/4	R023301077

## REDUKCJA

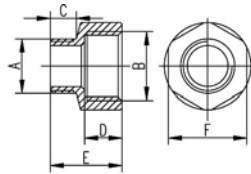


C [mm]	D [mm]	E [mm]	A	B	Kod towaru
10,5	14,5	21	G1/2	G1/4	R023301056
10,5	14,5	21	G1/2	G3/8	R023301057
11	16	26,5	G3/4	G1/2	R023301058
12	17,5	35	G1	G3/4	R023301059
14	19,5	42	G1	G1/2	R023301061
15	20,5	48,5	G5/4	G3/4	R023301064
12	17,5	35	G5/4	G1	R023301060
14	19,5	42	G6/4	G1	R023301062
15	20,5	48,5	G6/4	G5/4	R023301063
19	25,5	60	G2	G1	R023301065
19	25,5	60	G2	G5/4	R023301066
19	25,5	60	G2	G6/4	R023301067

# ZŁĄCZKI

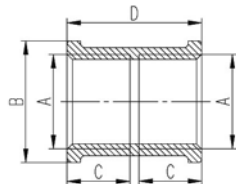
MOSIĄDZ

## REDUKCJA NAKRĘTNO WKRĘTNA



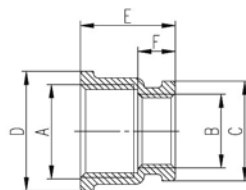
C [mm]	D [mm]	E [mm]	F [mm]	A	B	Kod towaru
8	10	20	20	G1/4	G3/8	R023301103
8,5	11	21,5	24	G3/8	G1/2	R023301104
11	12	25	30	G1/2	G3/4	R023301105
11	13,5	28	37	G1/2	G1	R023301106
12	14,5	29	37	G3/4	G1	R023301107
13	16	32	46	G1	G5/4	R023301108

## MUFA



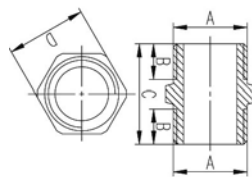
B [mm]	C [mm]	D [mm]	A	Kod towaru
27	14	30	G1/2	R023301021
34	16	34	G3/4	R023301022
41	17	36	G1	R023301023
49,5	20	43	G5/4	R023301024
57	25	53	G6/4	R023301025
70	27	65	G2	R023301026

## MUFA REDUKCYJNY



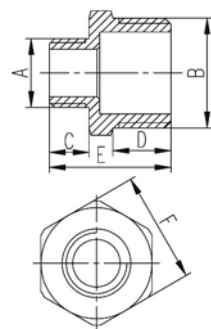
C [mm]	D [mm]	E [mm]	F [mm]	A	B	Kod towaru
22,5	27	21,50	8,5	G1/2	G3/8	R023301027
27	34	26	11,5	G3/4	G1/2	R023301028
27	40	28	12	G1	G3/4	R023301029
34	40	29	13	G1	G1/2	R023301030
40	49	33	14,5	G5/4	G1	R023301031
40	56	33	13,5	G6/4	G1	R023301032
49	56	35	16,5	G6/4	G5/4	R023301033
40	70	37	14	G2	G1	R023301034
49	70	39	16	G2	G5/4	R023301035
55	70	40	17	G2	G6/4	R023301036

## NYPEL



B [mm]	C [mm]	D [mm]	A	Kod towaru
9	22,5	18	G3/8	R023301037
10,5	25,5	23	G1/2	R023301038
12	29	28	G3/4	R023301039
13	31,5	35	G1	R023301040
15	31,5	44	G5/4	R023301041
16,5	39	50	G6/4	R023301042
19	45	62	G2	R023301043

## NYPEL REDUKCYJNY



C [mm]	D [mm]	E [mm]	F [mm]	A	B	Kod towaru
7,5	11	23	21	G1/4	G1/2	R023301044
9	11	24,5	21	G3/8	G1/2	R023301046
11,5	12,5	29	26,5	G1/2	G3/4	R023301045
11,5	14	30	33,5	G1/2	G1	R023301047
12	14	31	33	G3/4	G1	R023301048
13	16	34,5	42	G3/4	G5/4	R023301049
13,5	16	35	42	G1	G5/4	R023301050
13	16,5	35	48,5	G1	G6/4	R023301051
16	16,5	38	48,5	G5/4	G6/4	R023301052
14	20	40	60	G1	G2	R023301053
16	20	40	60	G5/4	G2	R023301054
16,5	20	42,5	60	G6/4	G2	R023301055